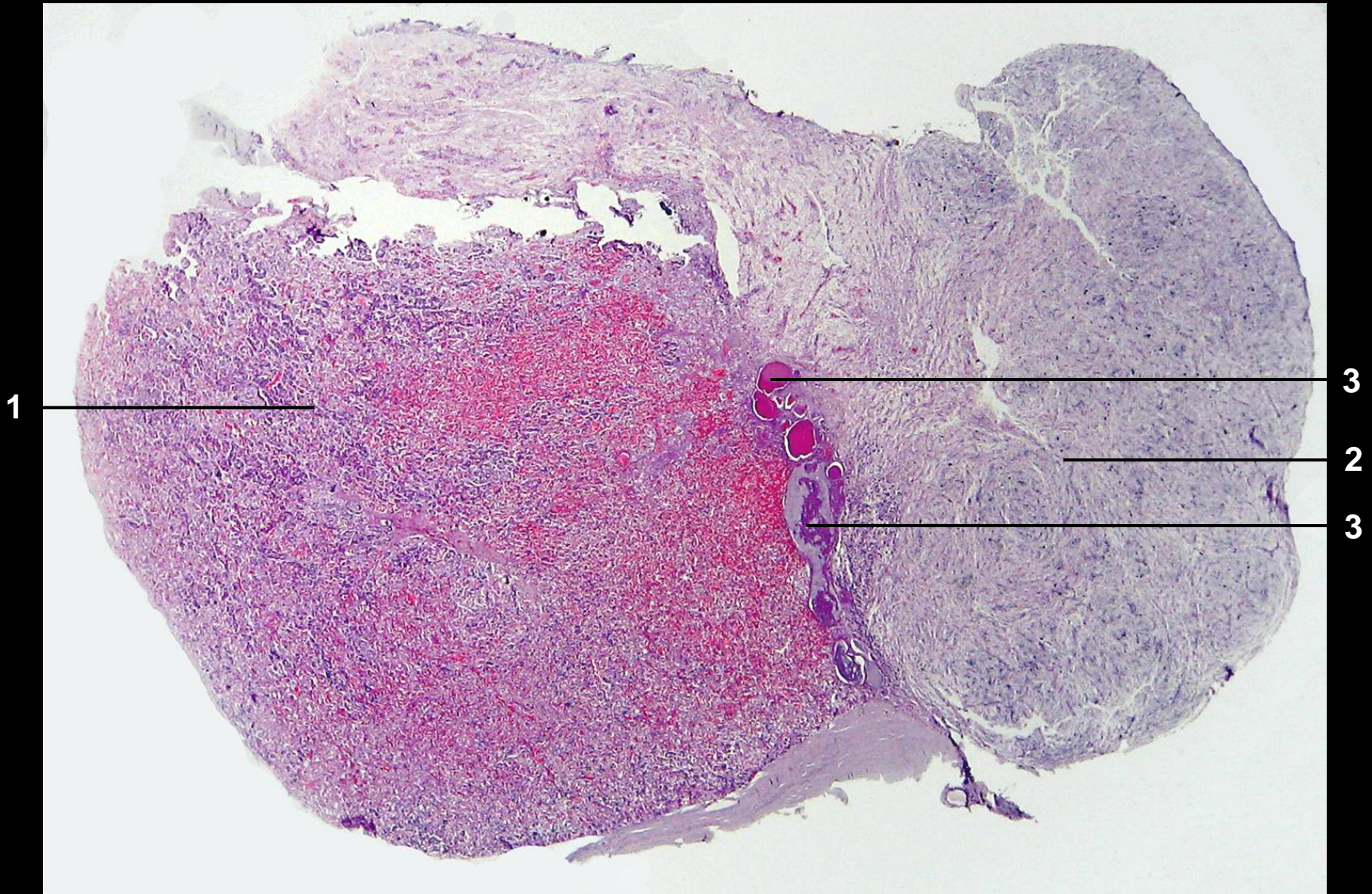


16 Endokrine Organe

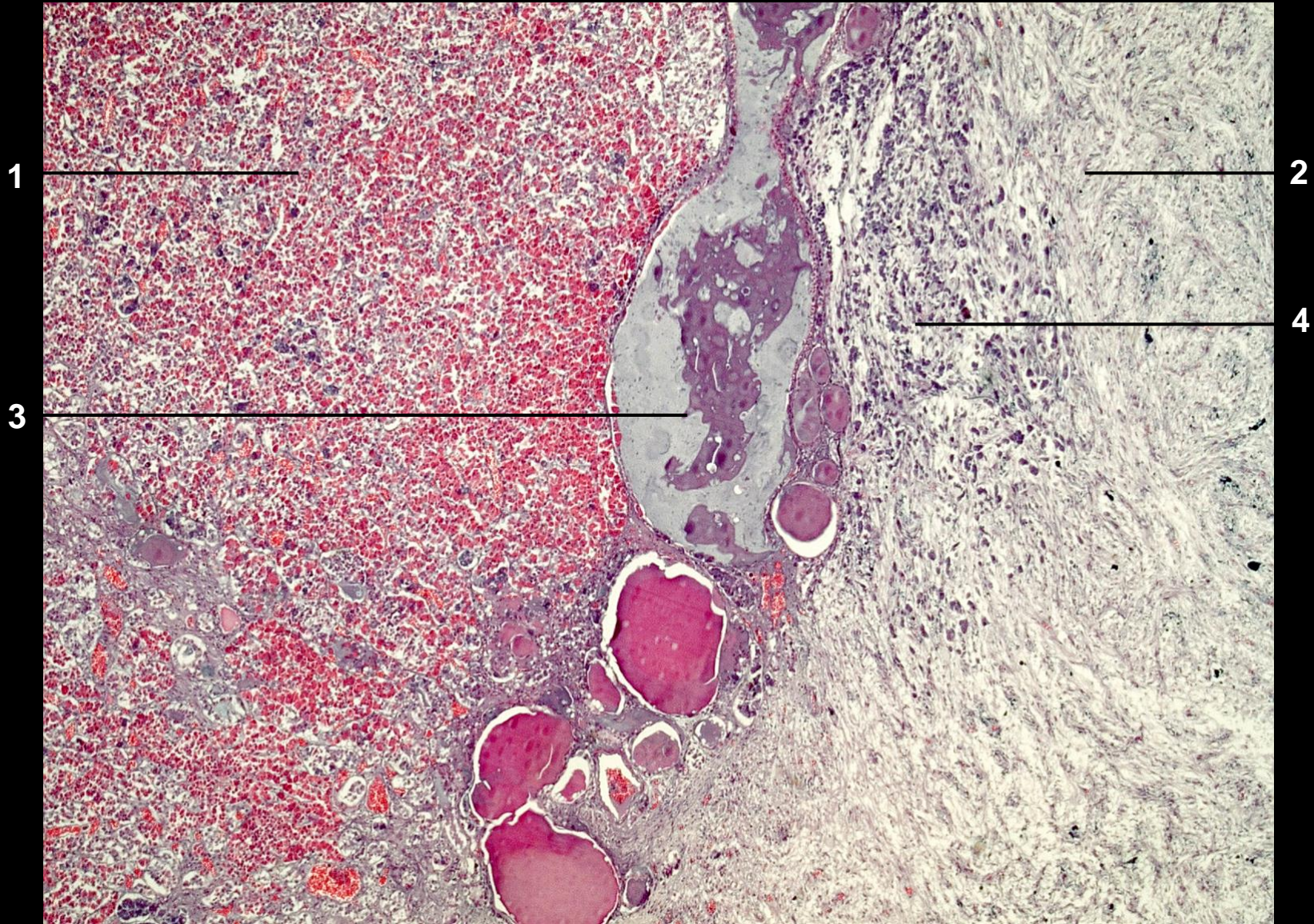
Hypophyse, Chrom-Hämalaun/Phloxin (Gomori).....	2-8
Schilddrüse, HE	9,10
Schilddrüse, C-Zellen, Immunhistochemie	11
Epithelkörperchen, HE	12,13
Nebenniere, Mensch, HE	14-19
Nebenniere, Chromatfixierung/Hämalaun	20,21
Pankreas, HE	22
Pankreas, A-Zellen, Immunhistochemie	23
Pankreas, B-Zellen, Immunhistochemie	24

Hypophyse (Chrom-Hämalaun/Phloxin nach Gomori) - Übersicht



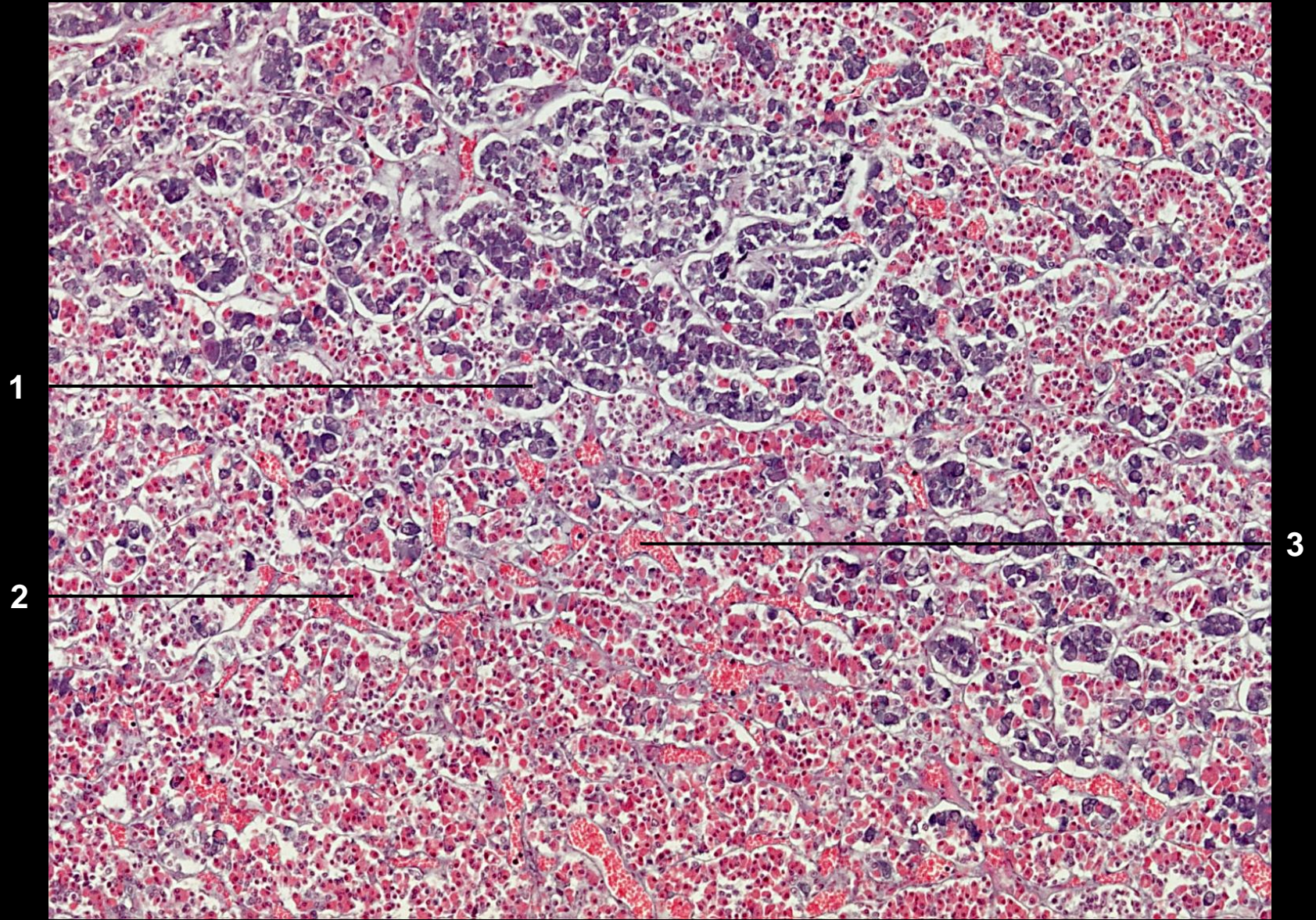
1 Adenohypophyse (HVL) 2 Neurohypophyse (HHL) 3 Kolloidzysten

Hypophyse (Chrom-Hämalaun/Phloxin nach Gomori)



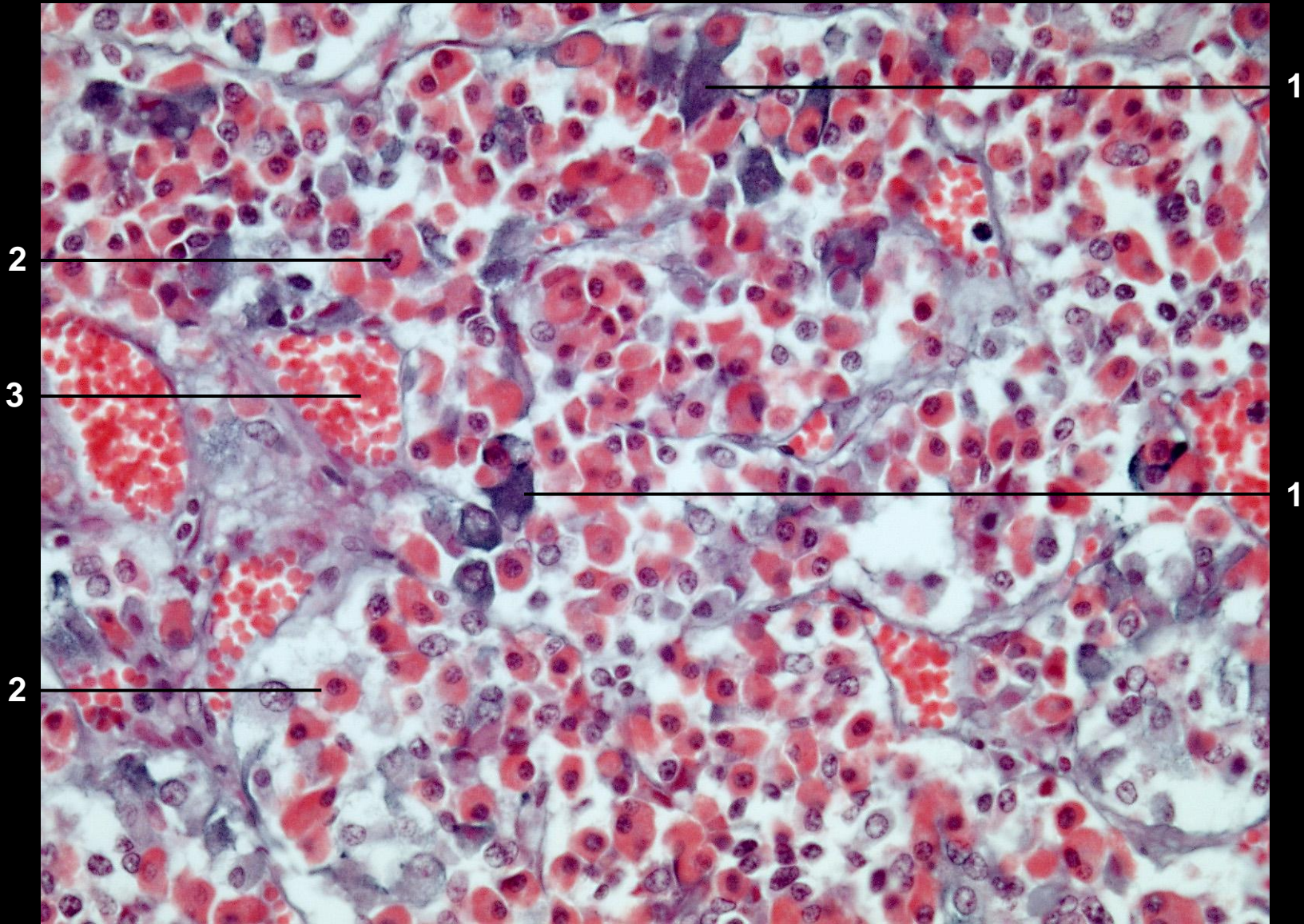
1 Adenohypophyse (HVL) 2 Neurohypophyse (HHL) 3 Kolloidzyste
4 Invasion basophiler Zellen in den HHL

Adenohypophyse (Chrom-Hämalaun/Phloxin nach Gomori)



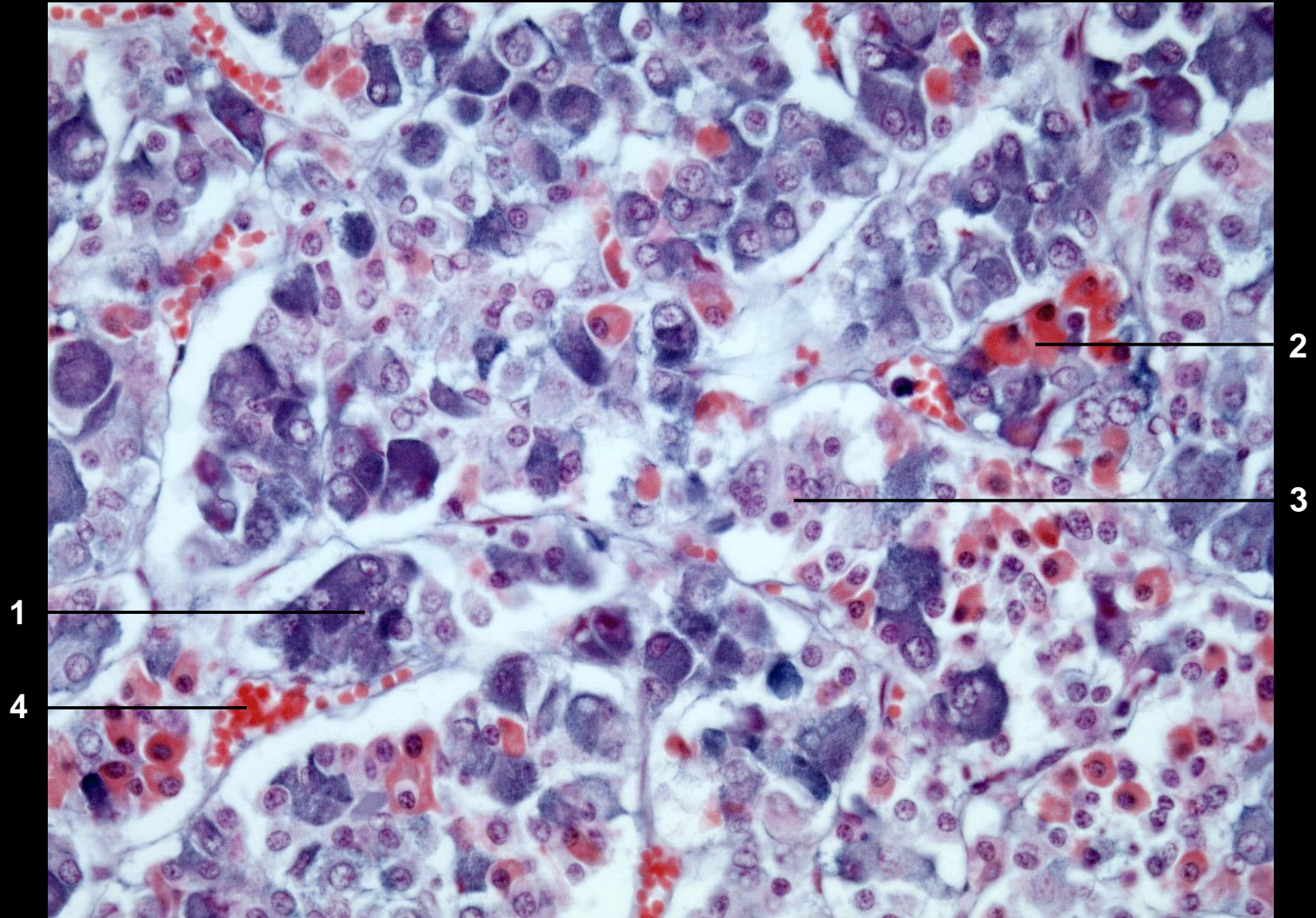
1 basophile Zellen 2 azidophile Zellen 3 sinusoide Kapillare

Adenohypophyse (Chrom-Hämalaun/Phloxin (Gomori))



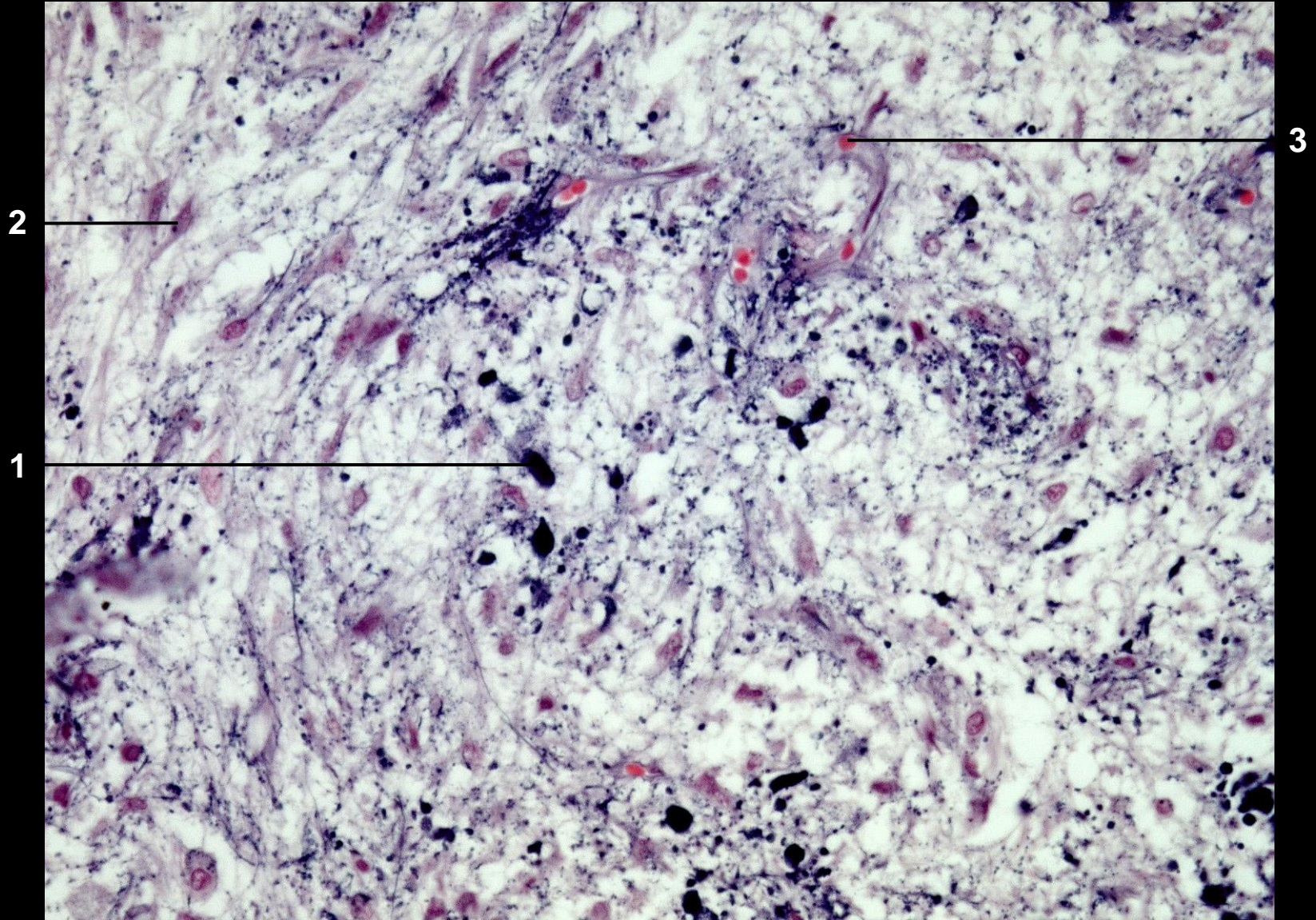
1 basophile Zellen 2 azidophile Zellen 3 sinusoide Kapillare

Adenohypophyse (Chrom-Hämalaun/Phloxin nach Gomori)



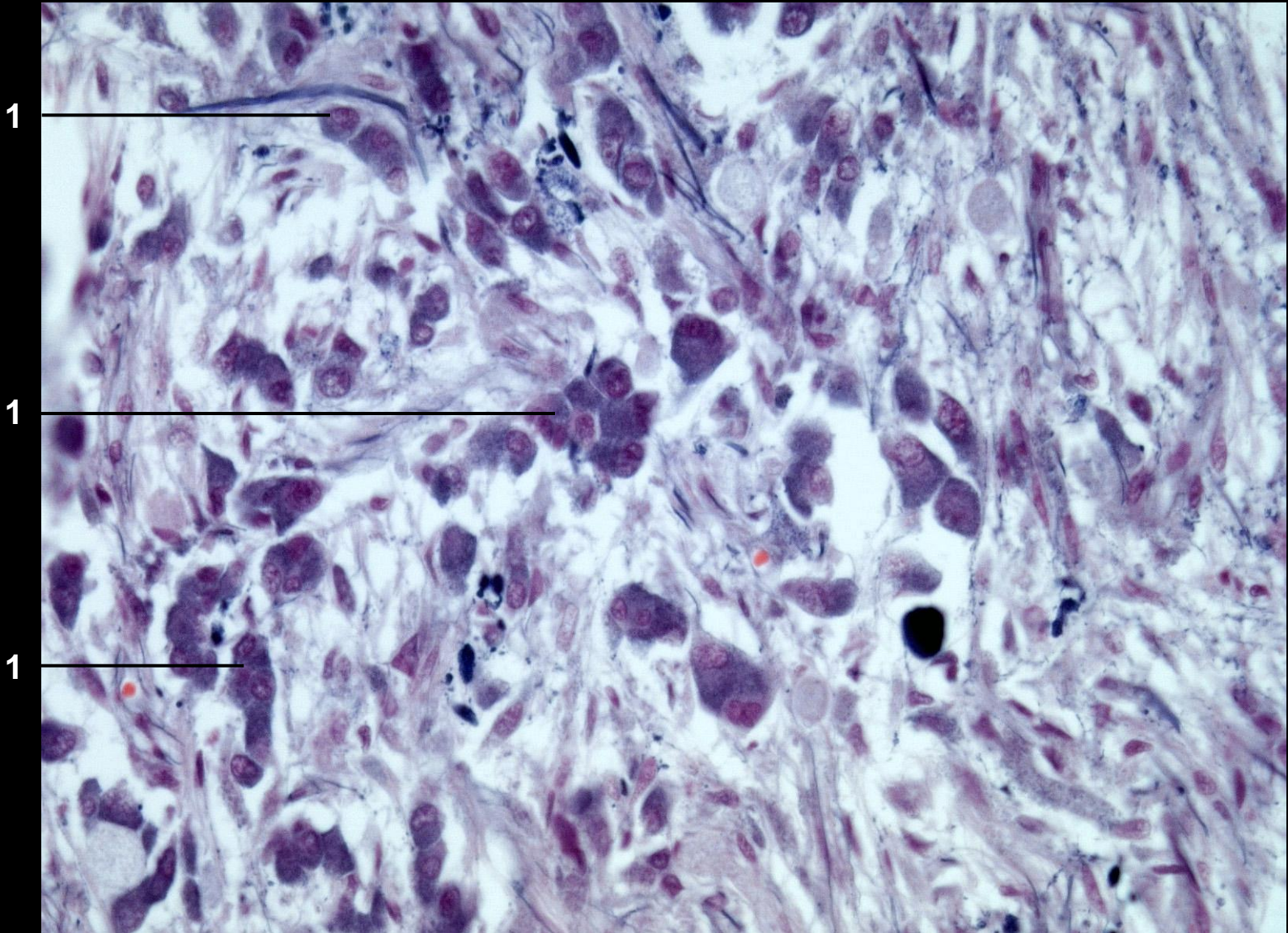
1 basophile Zellen 2 azidophile Zellen 3 chromophobe Zellen
4 sinusoide Kapillare

Neurohypophyse (Chrom-Hämalaun/Phloxin nach Gomori)



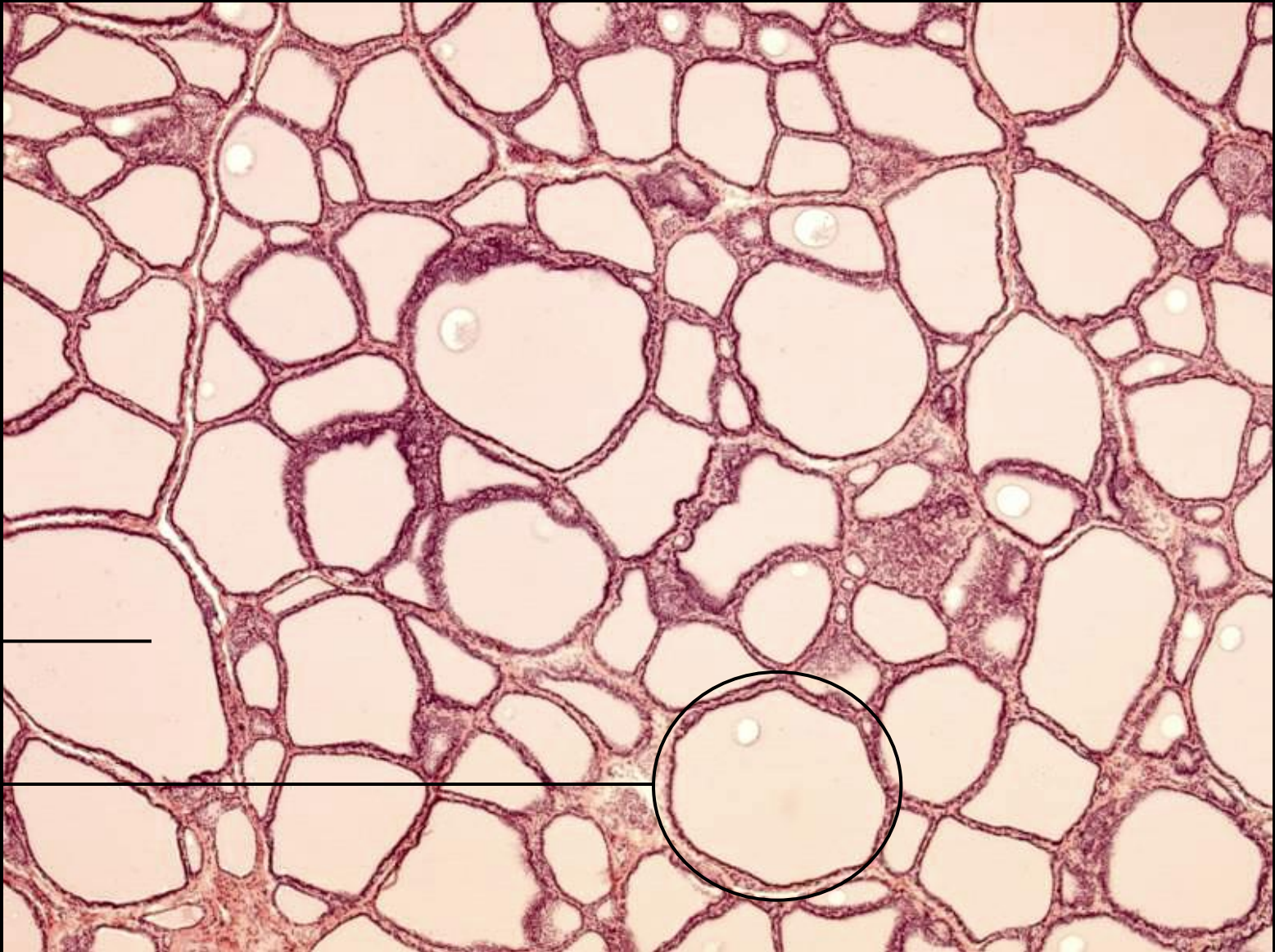
1 Herring-Körper 2 Kern einer Gliazelle (Pituizyt) 3 Erythrozyt

Neurohypophyse (Chrom-Hämalaun/Phloxin nach Gomori)



1 basophile Zellen, aus der Adenohypophyse eingewandert (“Basophileninvasion”)

Schilddrüse (Gl. thyroidea) - Übersicht (HE)

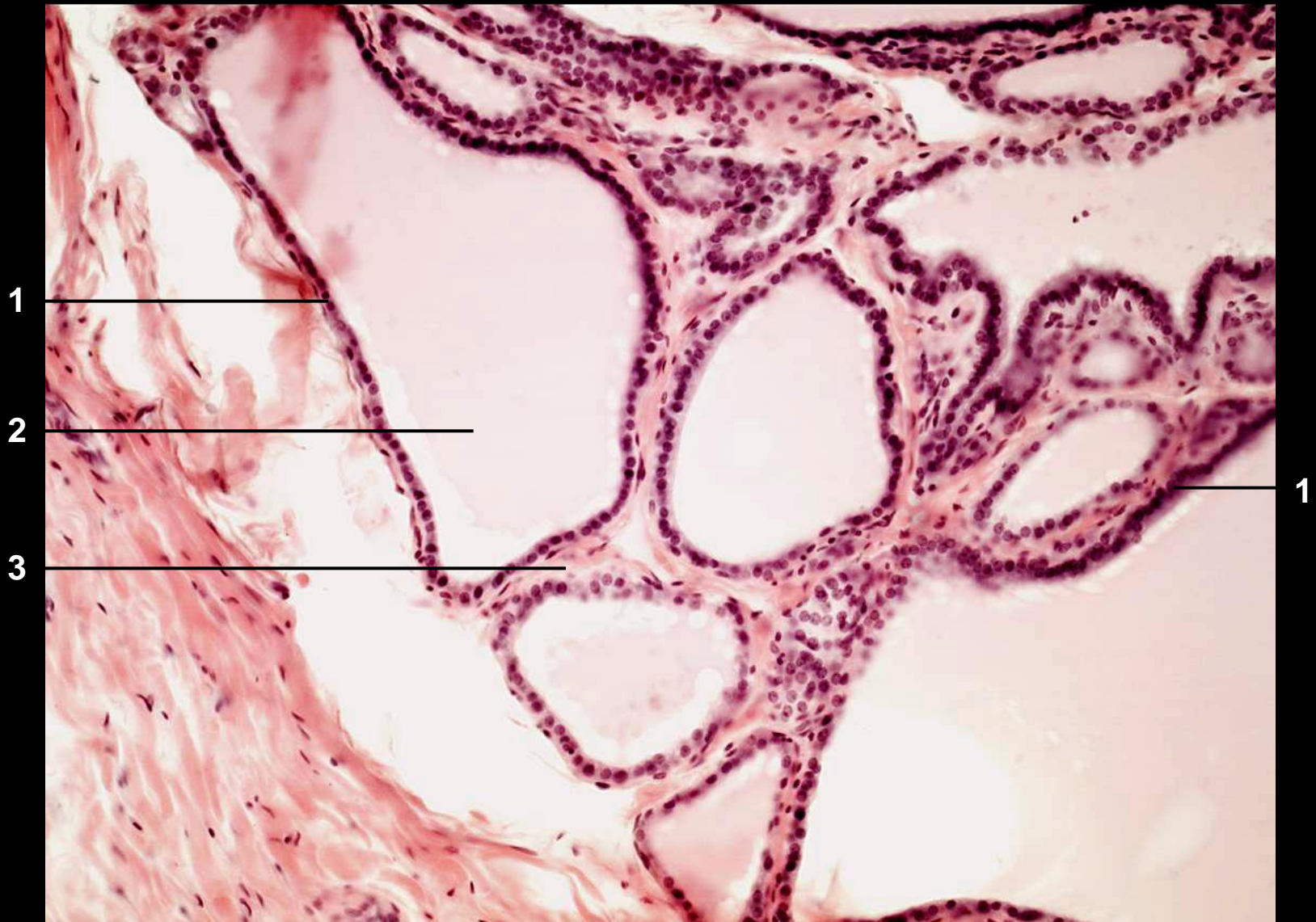


2

1

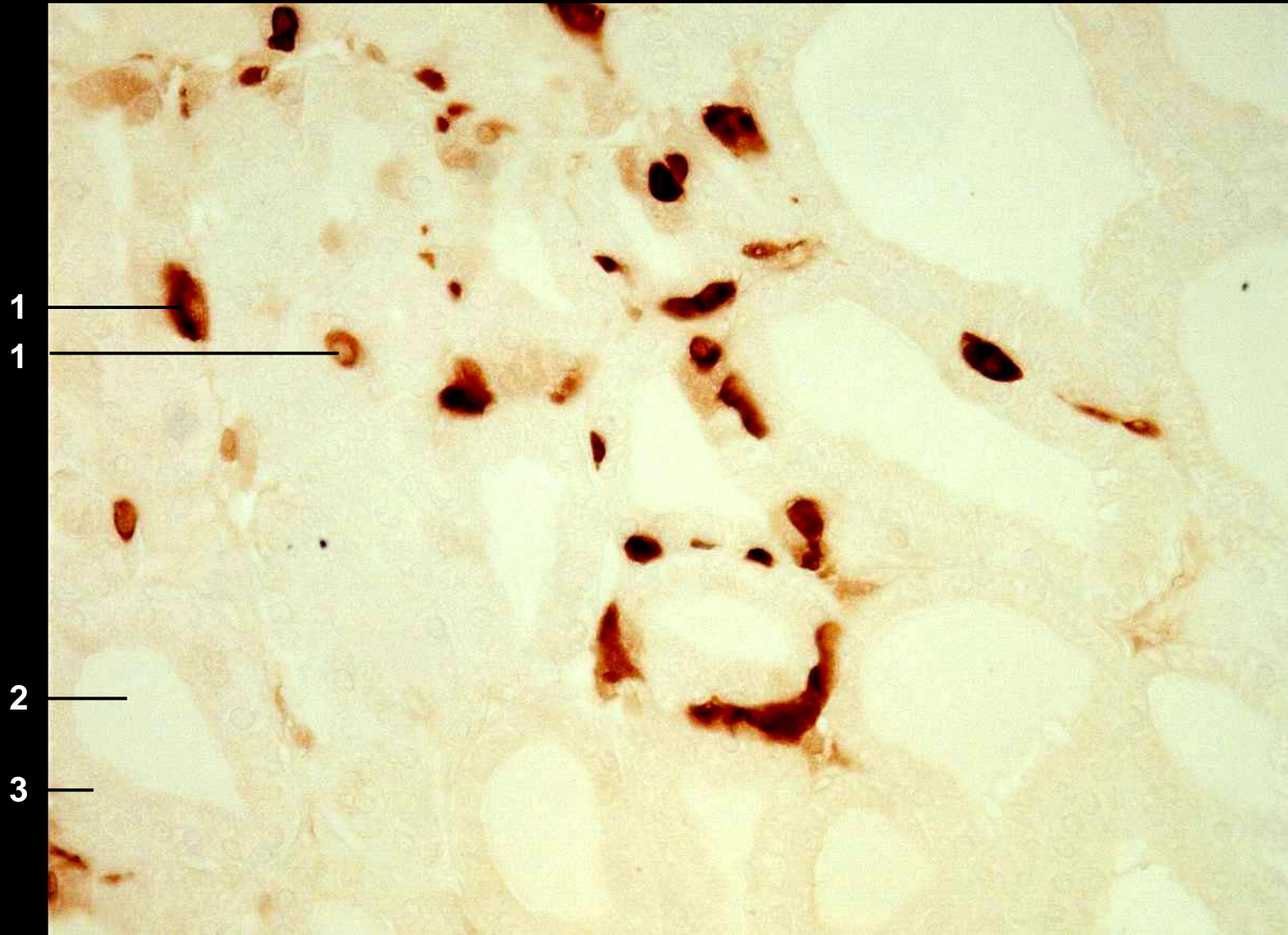
1 Schilddrüsenfollikel 2 Kolloid im Follikellumen

Schilddrüse (HE)



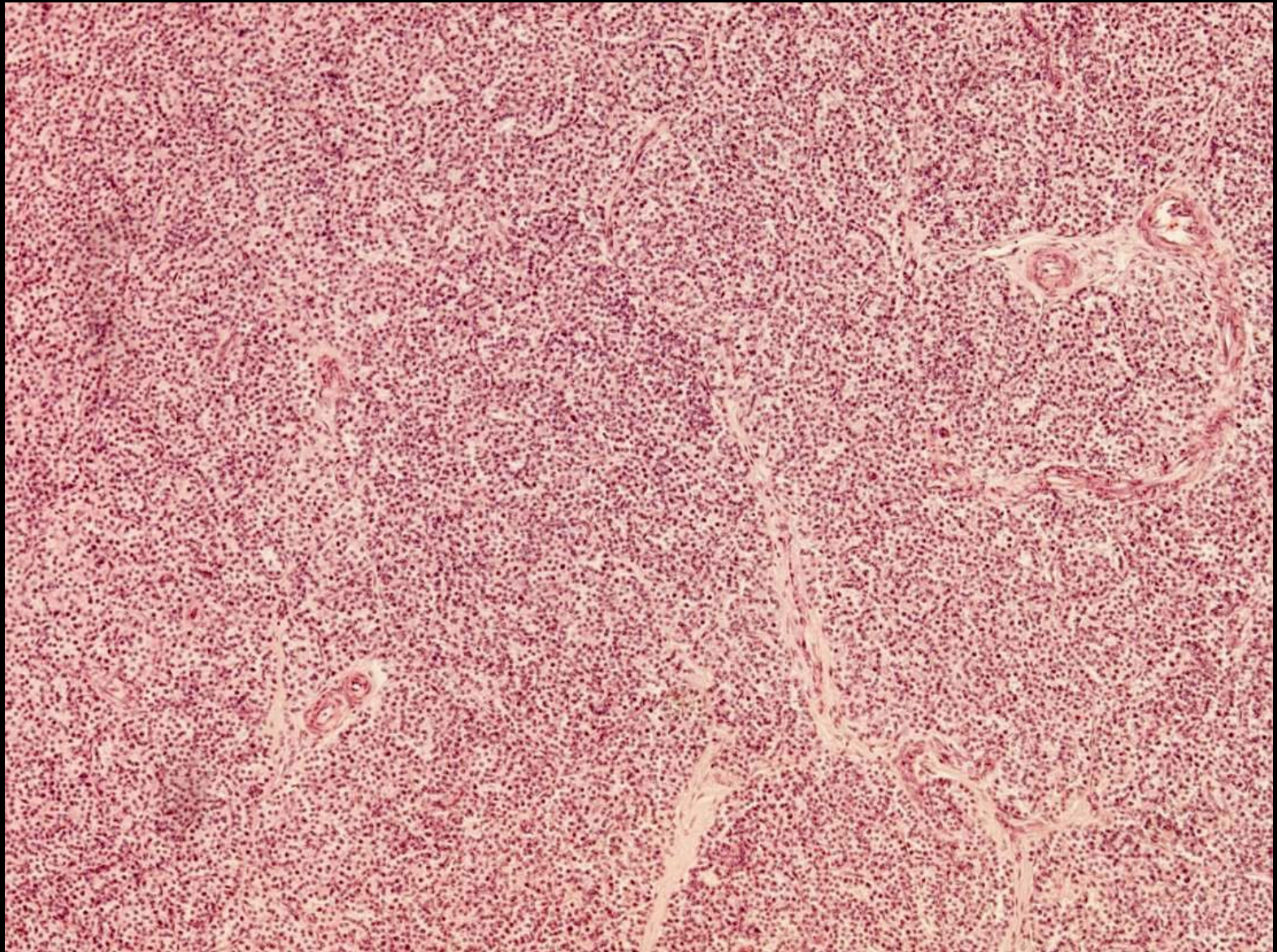
1 Follikelepithel 2 Kolloid im Follikellumen 3 Bindegewebe zwischen den Follikeln

Schilddrüse (Immunhistochemie, anti-Calcitonin-Antiserum)

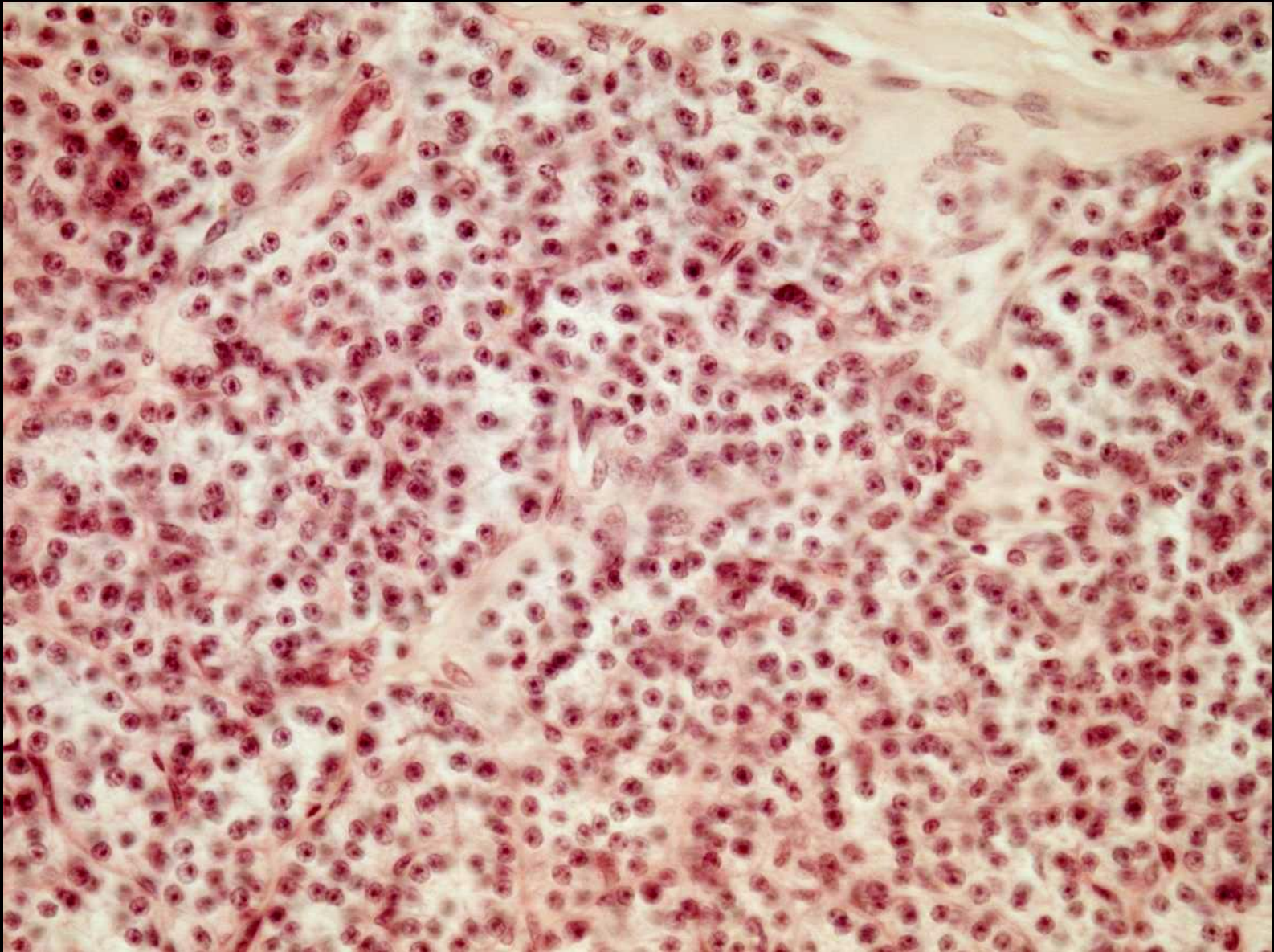


1 C-Zellen immunreaktiv (braun gefärbt) 2 Follikellumen
3 Follikelepithel (Thyreozyten ungefärbt)

Epithelkörperchen (Gl. Parathyroidea) - Übersicht (HE)



Epithelkörperchen (HE)

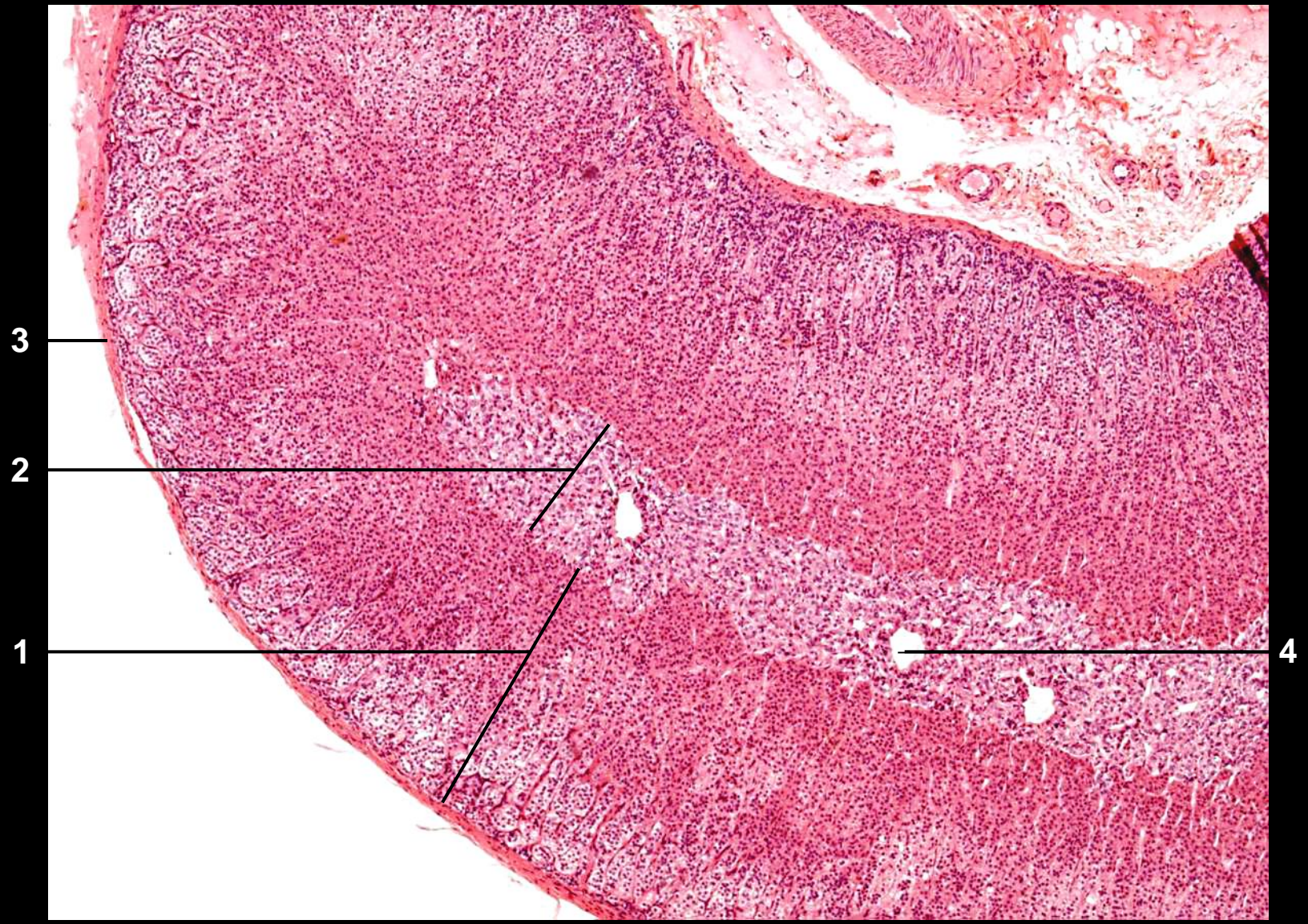


Nebenniere (Gl. suprarenalis) - Übersicht (HE)



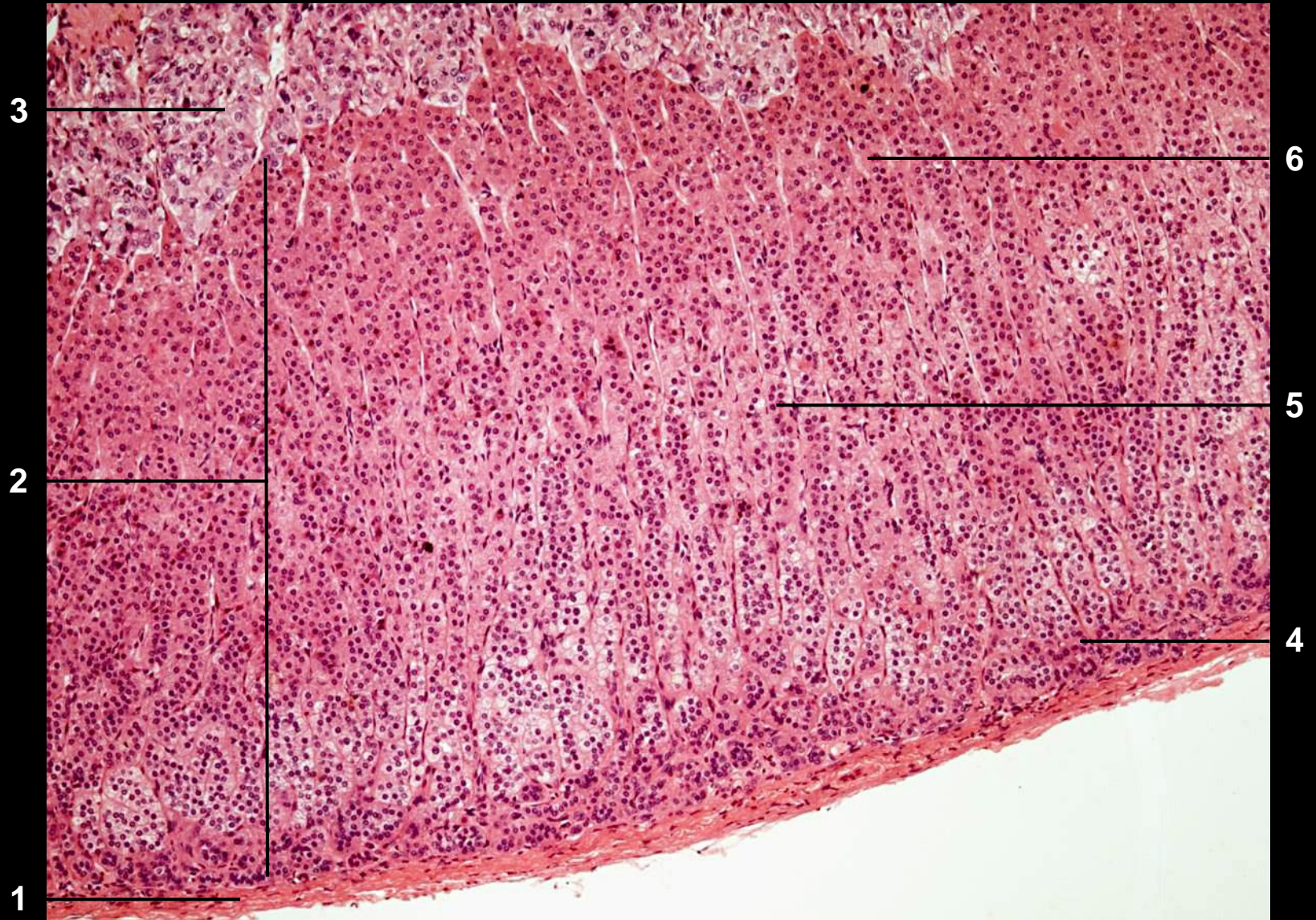
1 Nebennierenrinde 2 Nebennierenmark

Nebenniere - Übersicht (HE)



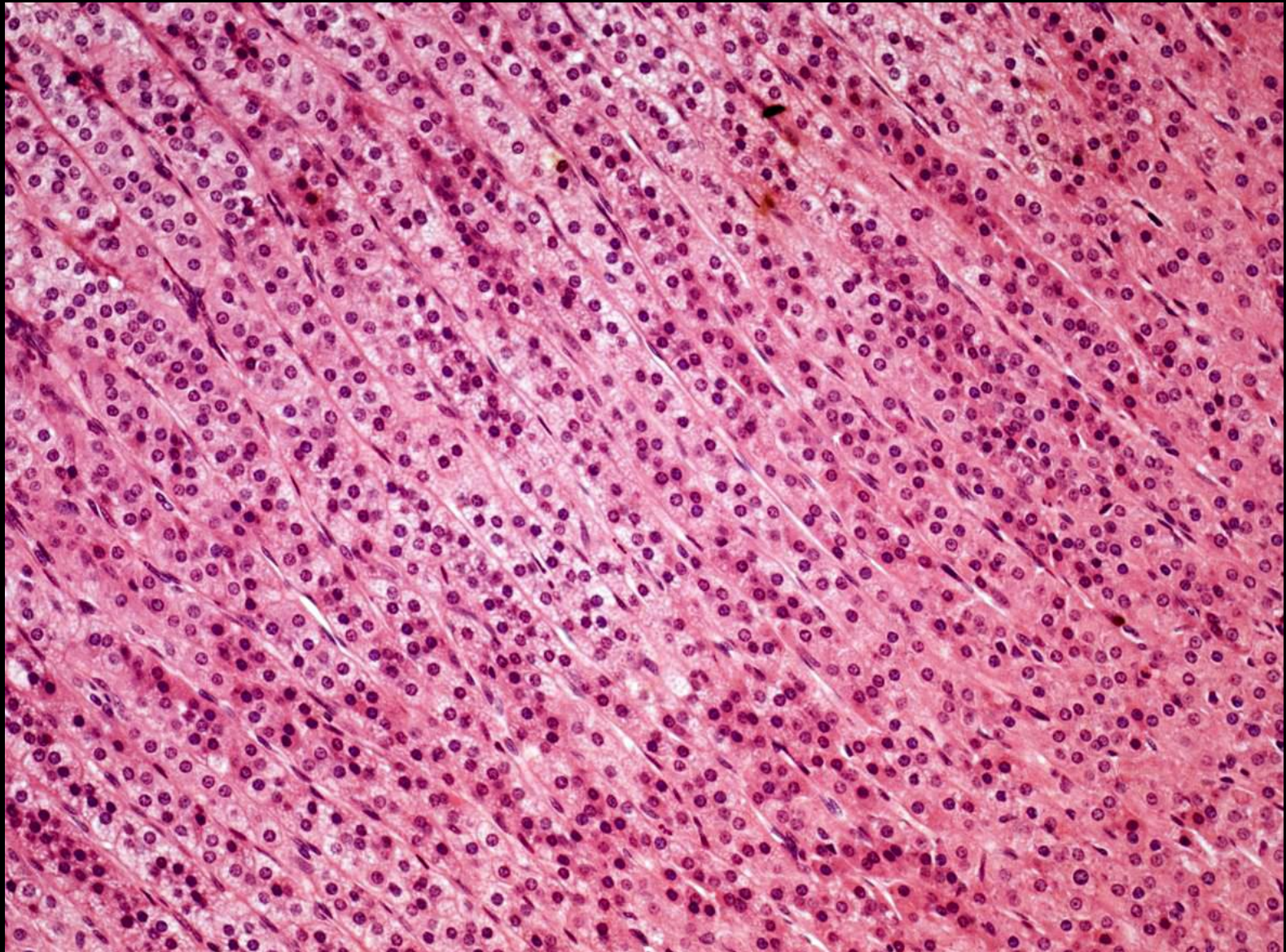
1 Nebennierenrinde 2 Nebennierenmark 3 Kapsel 4 Vene

Nebennierenrinde - Übersicht (HE)

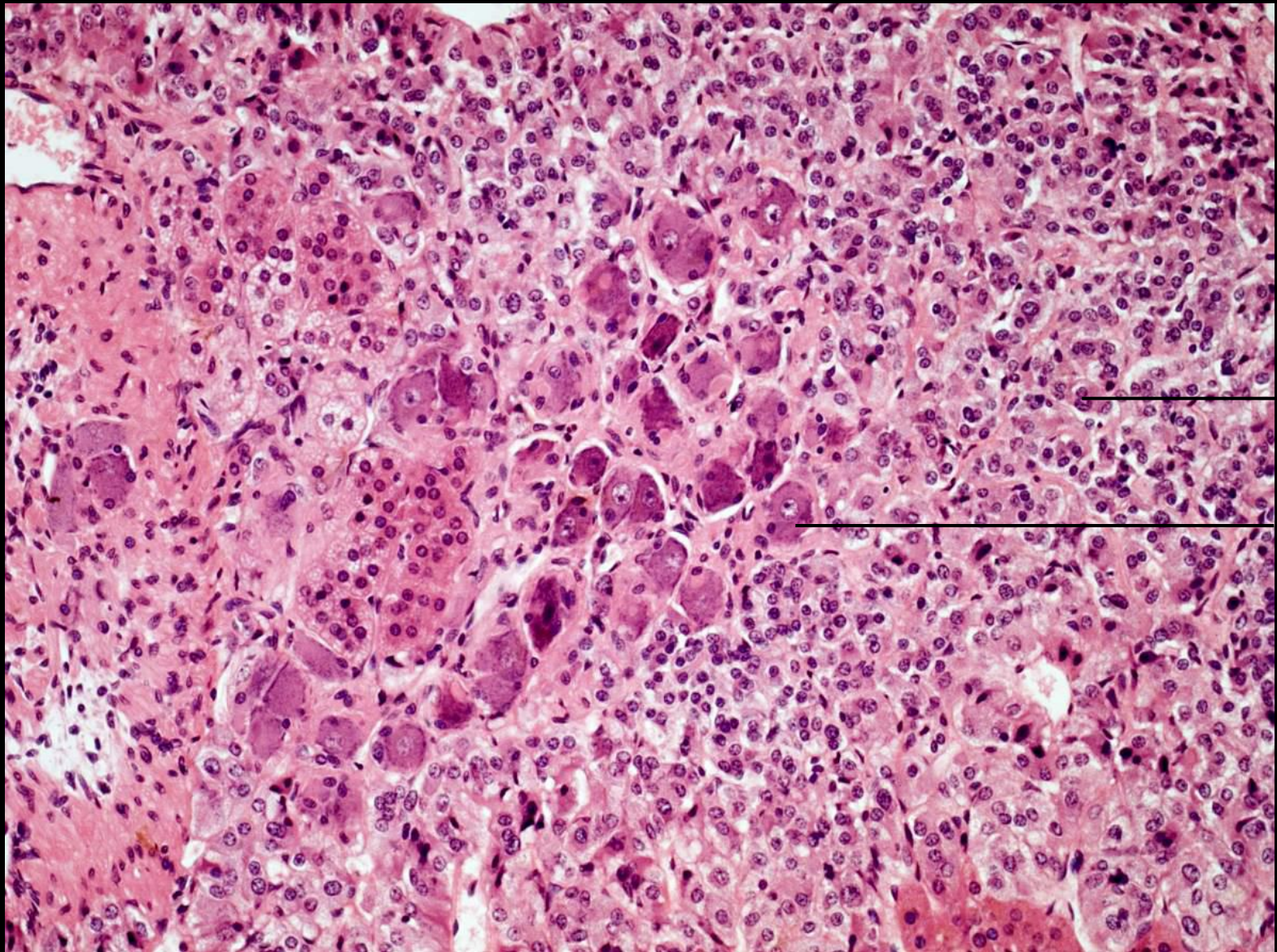


1 Kapsel 2 Nebennierenrinde 3 Nebennierenmark 4 Zona glomerulosa
5 Zona fasciculata 6 Zona reticularis

Nebennierenrinde – Zona fasciculata (HE)



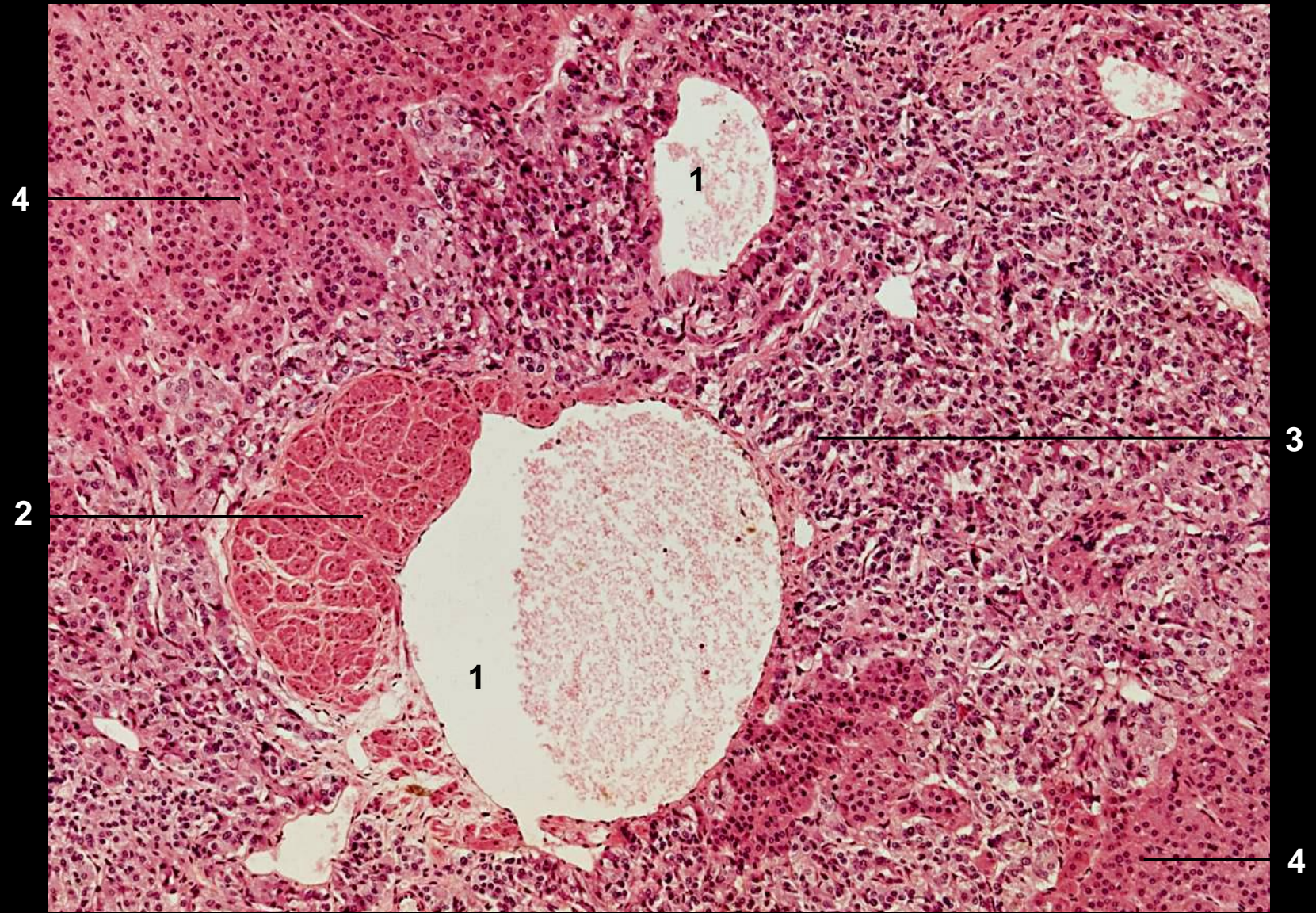
Nebennierenmark (HE)



2
1

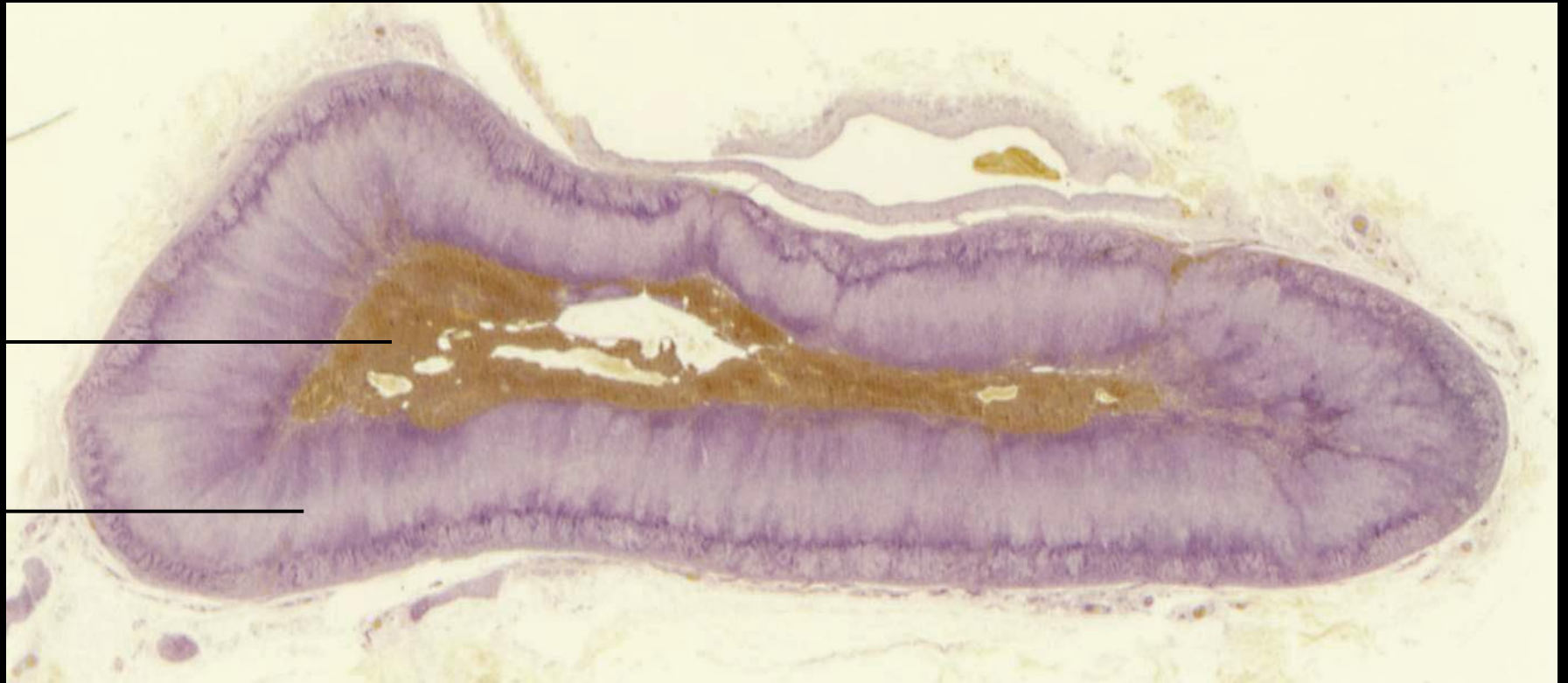
1 Ganglienzelle 2 chromaffine Zellen

Nebennierenmark (HE)



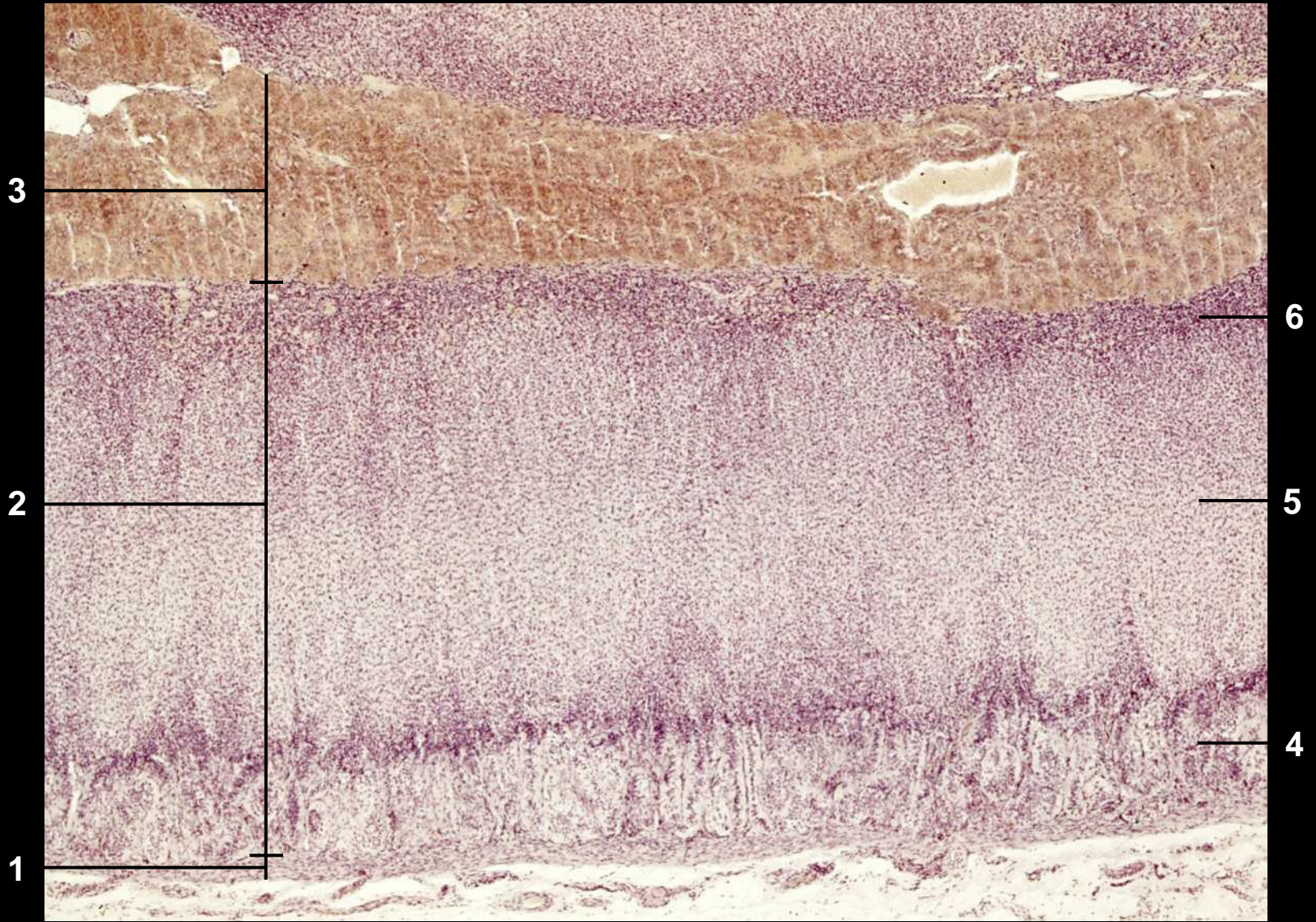
1 Vene (Lumen) 2 glatte Muskulatur 3 chromaffine Zellen
4 Nebennierenrinde, Zona reticularis

Nebenniere (Chromatfixierung/Hämalaun)



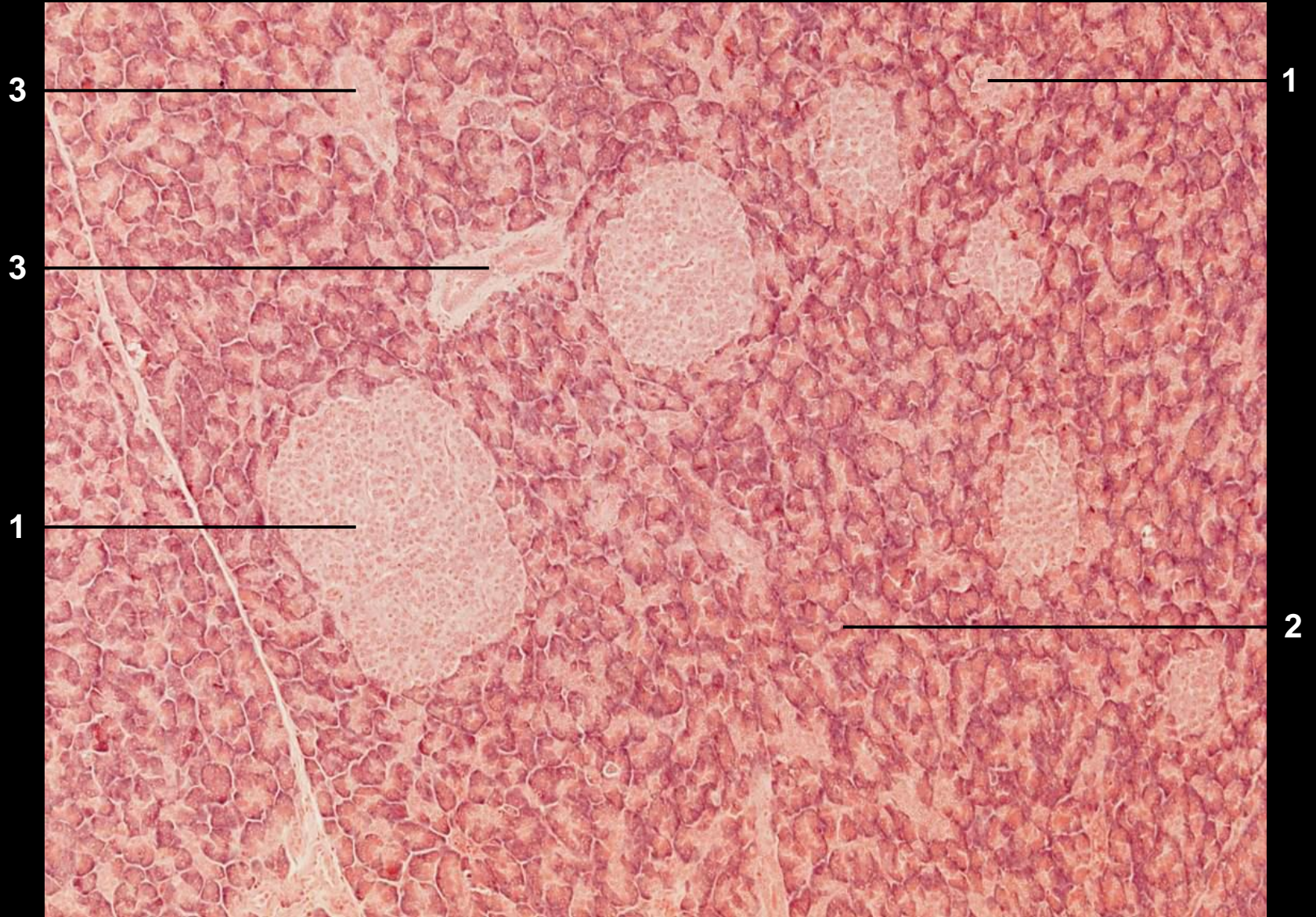
1 Nebennierenrinde 2 Nebennierenmark

Nebenniere (Chromatfixierung/Hämalaun)



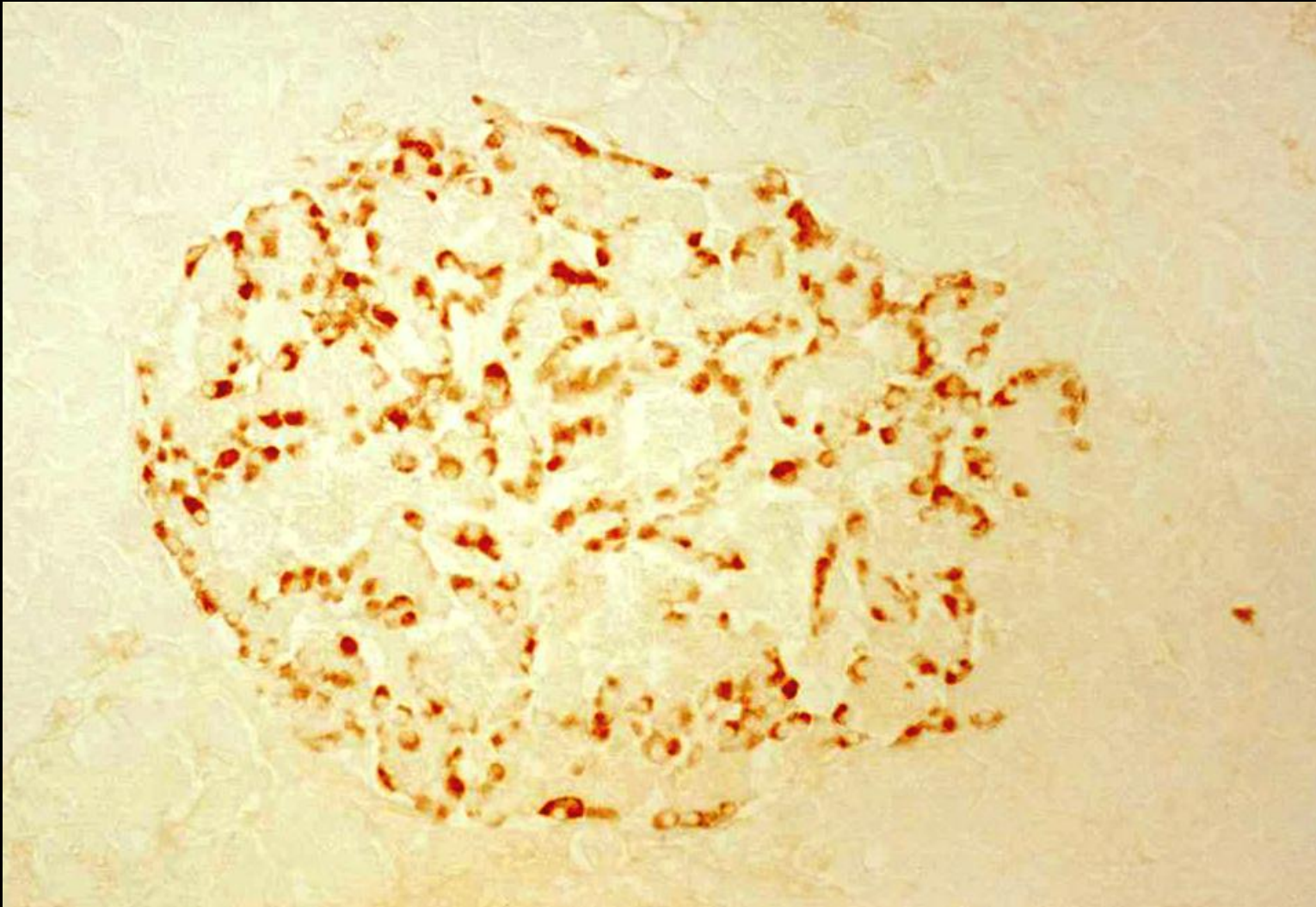
1 Kapsel 2 Nebennierenrinde 3 Nebennierenmark (chromaffine Zellen braun)
4 Zona glomerulosa 5 Zona fasciculata 6 Zona reticularis

Pankreas (HE)



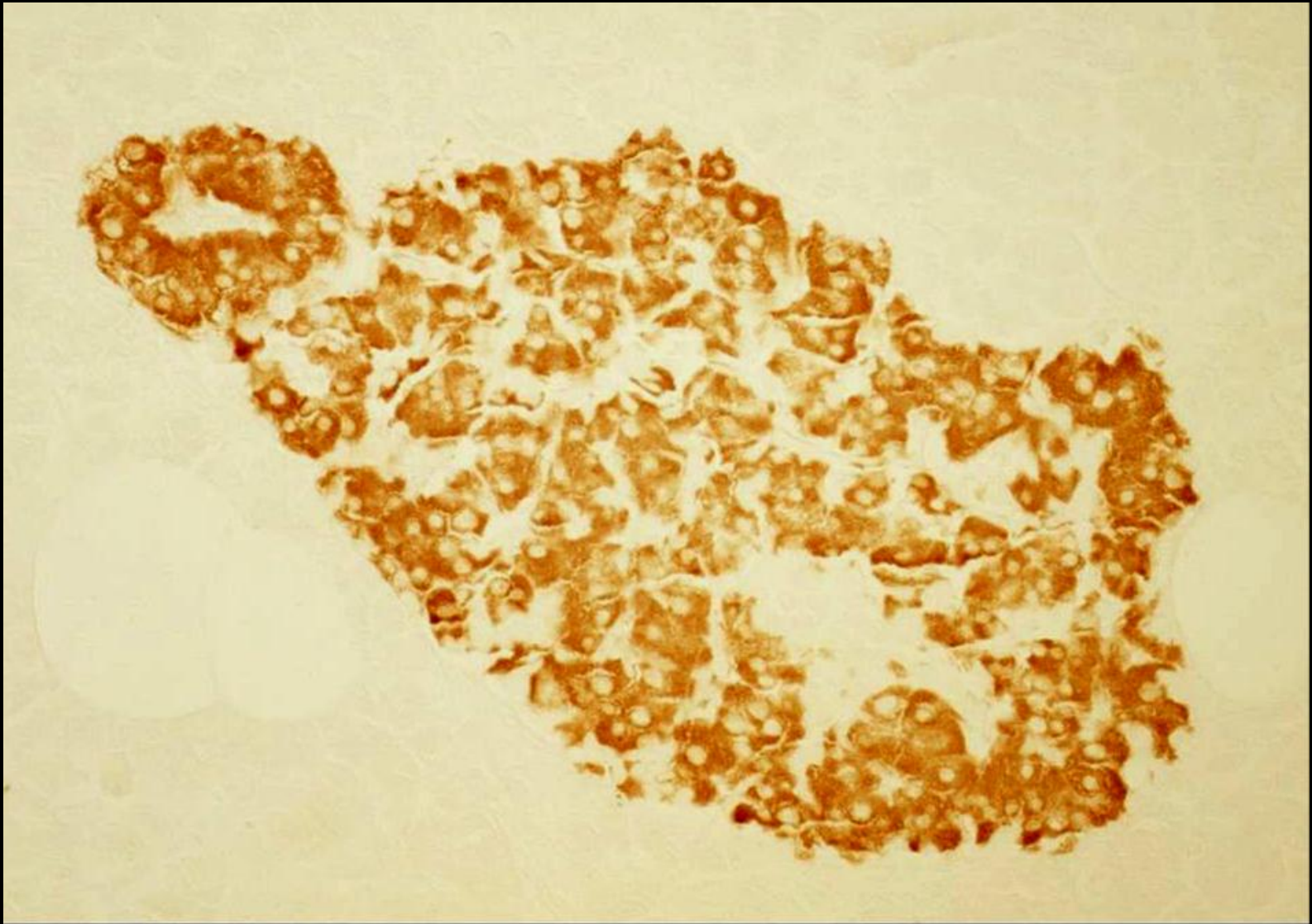
1 Langerhans'sche Insel 2 exokrines Pankreas 3 Ausführungsgang

Pankreas (Immunhistochemie, anti-Glukagon-Antiserum)



A-Zellen immunreaktiv (braun gefärbt)

Pankreas (Immunhistochemie, anti-Insulin-Antiserum)



B-Zellen immunreaktiv (braun gefärbt)