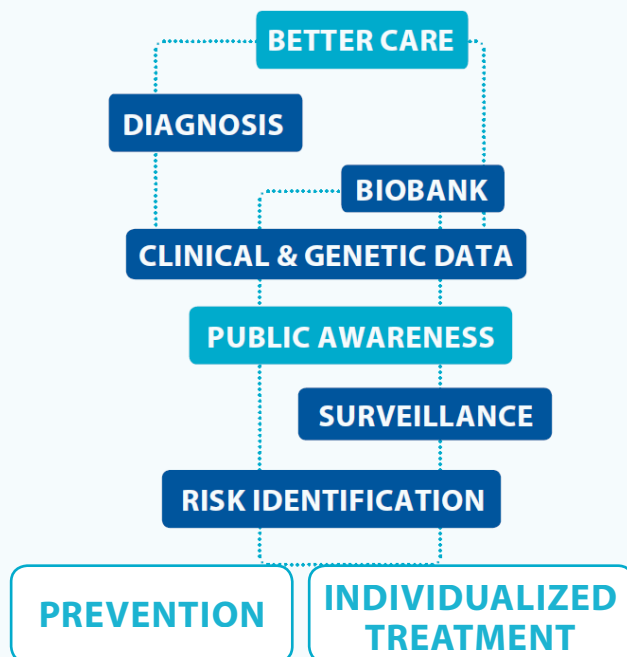


## Our Journey - Our Goal

### Simplified Roadmap



## The Members of the Subnetwork Familial Leukemia



**Coordination ERN PaedCan**  
**Prof. Dr. med. Ruth Ladenstein, MBA**  
St. Anna Kinderspital & St. Anna Kinderkrebsforschung, AT  
E-Mail: [ruth.ladenstein@ccri.at](mailto:ruth.ladenstein@ccri.at)



**Coordination Subnet Familial Leukemia**  
**Prof. Dr. med. Brigitte Schlegelberger**  
Hannover Medical School (MHH), DE  
E-Mail: [Schlegelberger.Britgitte@mh-hannover.de](mailto:Schlegelberger.Britgitte@mh-hannover.de)



● Centers of the Subnetwork Familial Leukemia

EUROPEAN REFERENCE NETWORKS  
FOR RARE, LOW-PREVALENCE AND COMPLEX DISEASES

**Share. Care. Cure.**

(1) Alina Ferster, Hôpital Universitaire des Enfants Reine Fabiola, Belgium;  
(2) Henrik Hasle, University Hospital Aarhus, Denmark; (3) Thomas Klingebiel, University Hospital Frankfurt, Frankfurt, Germany; (4) Marcin Wlodarski, University Hospital Freiburg, Freiburg; (5) Brigitte Schlegelberger, Hannover Medical School, Germany; (6) Cristina Mecucci, University Hospital of Perugia, Italy; (7) Wojciech Mlynarski, Medical University of Łódź, Poland; (8) Tomasz Szczepanski, Medical University of Silesia, Poland; (9) Alexandra Kolenova, University Hospital Bratislava, Slovakia; (10) Jude Fitzgibbon, Barts and the London School of Medicine and Dentistry, United Kingdom

**ERN PaedCan**

Subnetwork Familial Leukemia

**Join  
us!**

## Why do we need this sub-network?

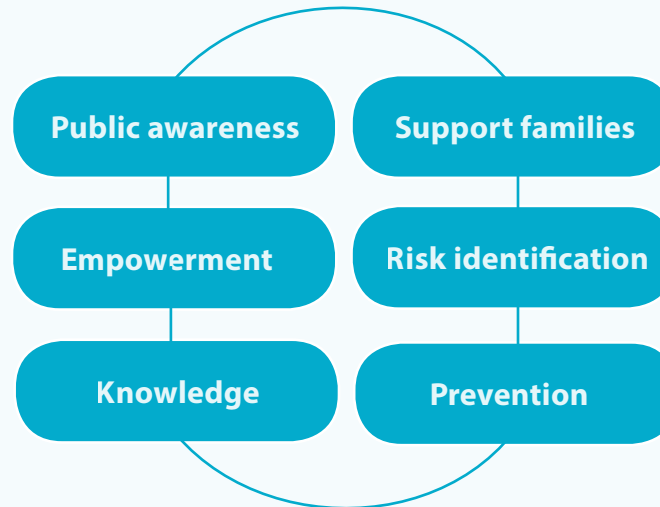
- High-quality healthcare for all European patients with familial leukemia
- Interdisciplinary network of experts across Europe
- Coordinated guidelines for prevention and treatment
- Basis for integrated research
- Tools for precision medicine
- Information and advocacy



### Specialized Network

Make more impact through hubs of profound expertise available to all European patients through cross-border healthcare.

## What do we want to achieve together?



### Prevention

Prevent leukemia in healthy siblings and family members at risk as well as secondary or independent new malignancies in leukemia patients.

## How can we help affected children and families?

- + Expert opinion for treating physicians
- + Practical guidance
- + Information and networking
- + Research for better diagnosis and treatment
- + Advise to families
- + Team up with patient advocacy



### Resources

Increase awareness to improve identification of patients with familial leukemia and provide the necessary resources.